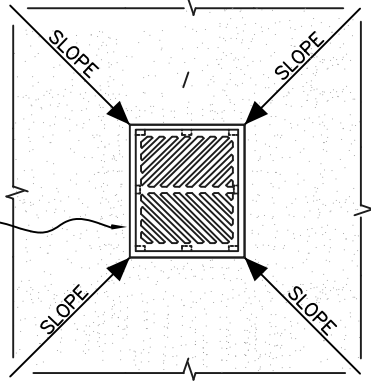
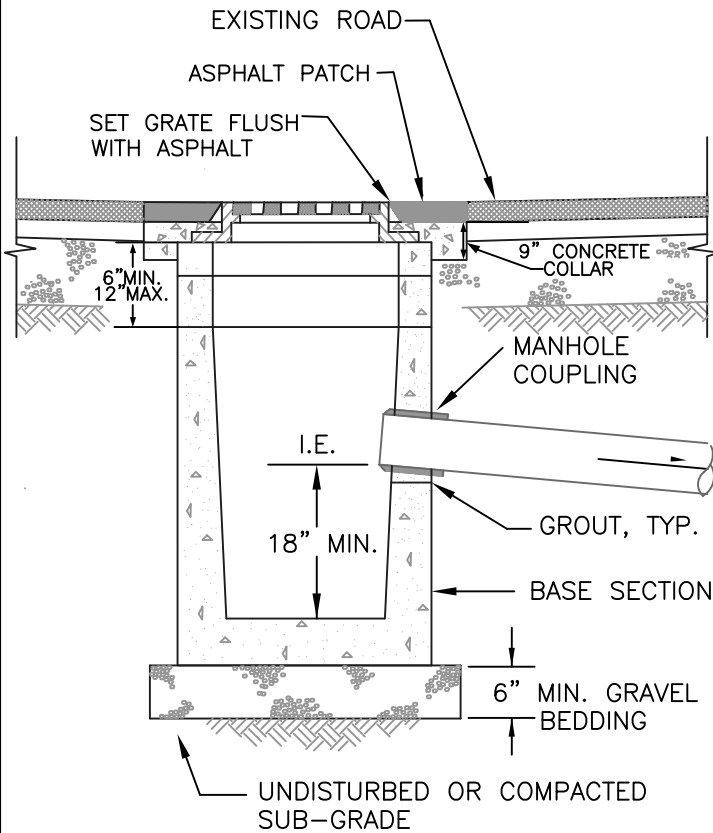


ASPHALT SLOPES
TOWARD CATCH BASIN



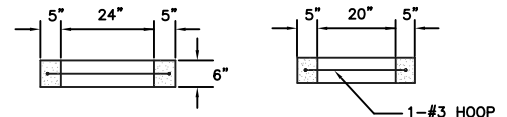
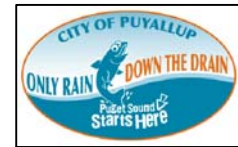
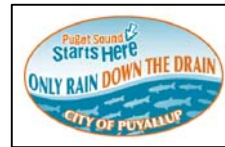
PLAN VIEW



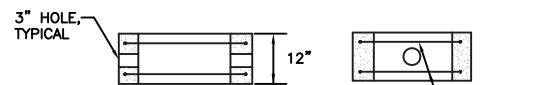
SECTION VIEW

NOTES:

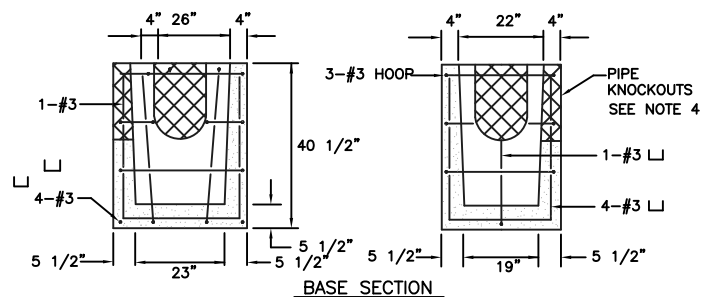
1. MAXIMUM LENGTH OF PIPE BETWEEN CATCH BASINS SHALL BE 400'.
2. TYPE 1 CATCH BASIN IS USED FOR DEPTHS LESS THAN 5'-0" FROM TOP OF GRATE TO I.E.(PIPE INVERT).
3. PRECAST BASE SECTION SHALL BE FURNISHED WITH CUTOUTS OR KNOCKOUTS. KNOCKOUTS SHALL HAVE A WALL THICKNESS OF 2" MIN. KNOCKOUTS SHALL BE ON 4 SIDES WITH A MAXIMUM DIAMETER OF 20" TO PROVIDE FOR A MINIMUM SUMP DEPTH OF 18".
4. THE TAPER ON THE SIDES OF THE PRECAST BASE SECTION SHALL NOT EXCEED 1/2" PER FOOT.
5. CATCH BASIN SHALL BE CONSTRUCTED IN ACCORDANCE WITH ASTM C 478 (AASHTO M 199) AND ASTM C 890 UNLESS OTHERWISE NOTED.
6. CATCH BASIN MARKER WILL BE AFFIXED WITH MANUFACTURER'S EPOXY IN DRY WEATHER, 40 DEGREES OR WARMER. IF CURB EXISTS MARKER IS PLACED ON TOP OF CURB, IF A RAISED EDGE PLACE MARKER ON THE WEDGE, IF NO CURB PLACE ON PAVEMENT ON SIDE LEAST EXPOSED TO TRAFFIC



6" UNIT "S"
(RISER SECTION)



12" UNIT "S"
(RISER SECTION)



BASE SECTION



CITY OF
PUYALLUP

DEVELOPMENT ENGINEERING and
PUBLIC WORKS DEPARTMENTS

CATCH BASIN
TYPE 1 (AREA DRAIN)

DRAWN BY LINDA LANSING	CHECKED BY LINDA LIAN	APPROVED BY COLLEEN HARRIS	REVISED BY XXXX	CITY STANDARD
FILE NAME F:\DWG\COMMON\STDS\CITY\2009\02_SD\02.01.02	DATE APPROVED 09/01/1992	DATE REVISED 06/01/2003	SCALE NTS	02.01.02